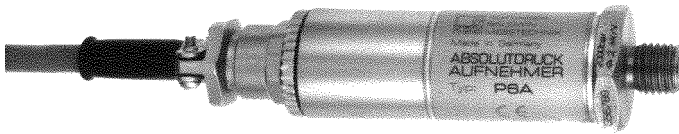


P6A

Absolute Pressure Transducers



Version with cable connection



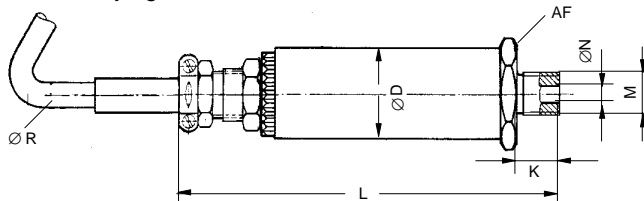
Version with plug connection

Special features

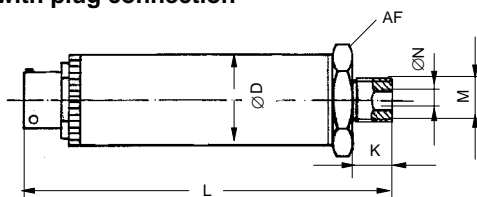
- For static and dynamic pressure measurements in gases and fluids
- Measuring ranges from 0...10 bar to 0...500 bar
- Ideal for test-rig applications
- Specially resistant for operation on alternating loads
- Protection class IP67 according to EN 60 529
- Conforms to EG EMC guidelines

Dimensions (in mm; 1 mm= 0.03937 inches)

Version with cable connection
3m cable, flying leads



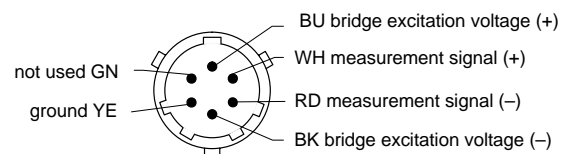
Version with plug connection



Cable connection coding

- | | |
|-----------------|-----------------------------------|
| 2 - BK (black) | } bridge excitation voltage U_B |
| 3 + BU (blue) | |
| 2' - GY (grey) | } sense lines |
| 3' - GN (green) | |
| 1 + WH (white) | } measurement signal U_A |
| 4 - RD (red) | |
| 5 YE (yellow) | cable screen (ground) |

Plug connection coding (optional)



| P6A | | $\varnothing D$ | K | L | M | $\varnothing N$ | $\varnothing R$ | AF |
|-----------------------|-------------------|-----------------|----|-------------|---------|-----------------|-----------------|----|
| with cable connection | 10 bar... 50 bar | 25 | 12 | approx. 112 | M12x1.5 | 5 | 6.5 | 27 |
| with plug connection | 10 bar... 500 bar | 25 | 12 | approx. 97 | M12x1.5 | 5 | - | 27 |

Specifications (to DIN 16 086)

| Type | | P6A | | | | | |
|--|--------|--|----|----|-----|-----|-----------------------------|
| Accuracy class | | 0.2 | | | | | |
| Measuring range, 0bar... | bar | 10 | 20 | 50 | 100 | 200 | 500 |
| Natural frequency of measuring element | kHz | 13 | 15 | 26 | 38 | 65 | > 100 |
| Mechanical values to VDI/VDE 2600, related to full scale value | | | | | | | |
| Operating range at +23 °C [+73.4 °F] | % | 0...200 | | | | | 0...150 |
| Overload limit at +23 °C[+73.4 °F] | % | 250 | | | | | 200 |
| Test pressure | % | 250 | | | | | 200 |
| Destruction range | % | > 250 | | | | | > 200 |
| Materials of of the parts in contact of the mesurement medium of the parts in contact with environment | | 1.4301/1.4542 1.4301, 1.4541, nickel-plated brass, rubber, silicone rubber | | | | | 1.4542 1.4542/ 1.4541 |
| Nominal range of excitation voltage | V | 0,5...12 | | | | | |
| Input resistance at +23 °C [+73.4 °F] | Ω | 350 ± 5 | | | | | |
| Output resistance at +23 °C [+73.4 °F] | Ω | 350 ± 5 | | | | | |
| Nominal sensitivity | mV/V | 2 | | | | | |
| Sensitivity tolerance (deviation of the sensitivity from nominal sensitivity) | % | ≤ ± 0.2 | | | | | |
| Temperature coefficient of sensitivity in nominal range of excitation voltage per 10 K, related to the actual value in the nominal temperature range in the operating temperature range | | % % | | | | | ≤ ± 0.1 ≤ ± 0.2 |
| Temperature coefficient of the zero signal in the nominal range of excitation voltage per 10 K, related to the nominal sensitivity in the nominal temperature range in the operating temperature range | | % % | | | | | ≤ ± 0.15 ≤ ± 0.2 |
| Deviation from characteristic (origin setting) | % | ≤ ± 0.2 | | | | | |
| Repeatability to DIN 1319 | % | ≤ ± 0.05 | | | | | |
| Nominal temperature range | °C[°F] | -10...+80 [+14...+176] | | | | | |
| Service temperature range | °C[°F] | -40...+100 [-40...+212] (...+120 °C [+248 °F] ..up to 24 hours) | | | | | |
| Storage temperature range | °C[°F] | -50...+100[-58...+212] (...+120 °C [+248 °F] ..up to 24 hours) | | | | | |
| Weight without cable, approx. | g | 200 | | | | | |

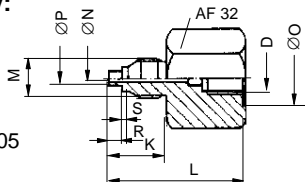
Accessories

Included with device: 1 USIT Ring U12.7x20x1.5

To be ordered separately:

Connection studs for measurement ranges up to 500 bar.

Material: Stainless steel 1.4305



| Type | D | K | L | M | N | O | P | R | S |
|---------------|---------|----|----|---------|---|------|---|---|---|
| P3 M/500/M14 | M12x1,5 | 19 | 50 | M14x1,5 | 3 | 20,2 | 5 | 5 | 2 |
| P3 M/500/M20 | M12x1,5 | 25 | 50 | M20x1,5 | 4 | 20,2 | 5 | 5 | 3 |
| P3 M/500/R1/2 | M12x1,5 | 20 | 50 | G1/2 | 4 | 20,2 | 5 | 5 | 3 |

Connection cable Kab 405.30-3 (for versions with HS6P plug)

Cable socket HK6S, Order No. 3-3312.0095

Cable plug MS3106A16S-1P, Order No. 3-3312.0027

15 pole D plug, Order No. 2-9278.0321

Order code P6A – –

Ordering example P6A – 010B – D

Ordering details

| Code | Option 1: Measurement range |
|------|-----------------------------|
| 010B | 10 bar |
| 020B | 20 bar |
| 050B | 50 bar |
| 100B | 100 bar |
| 200B | 200 bar |
| 500B | 500 bar |

| Code | Option 2: Electrical connection |
|------|--|
| K | with cable, 3 m, flying leads |
| Y | with cable, ≤ 20 m, flying leads ^{*)} |
| M | with cable, 3 m, MS plug |
| D | with cable, 3 m, D15 plug |
| N | with cable, ≤ 20 m, MS plug ^{*)} |
| F | with cable, ≤ 20 m, D15 plug ^{*)} |
| P | with H86P plug |

^{*)} Please state required cable length

Modifications reserved.
All details describe our products in general form only. They are not to be understood as express warranty and do not constitute any liability whatsoever.

Hottinger Baldwin Messtechnik GmbH

Postfach 10 01 51, D-64201 Darmstadt
Im Tiefen See 45, D-64293 Darmstadt
Tel.: +49/61 51/ 8 03-0; Fax: +49/61 51/ 8039100
E-mail: support@hbm.com www.hbm.com



measurement with confidence